

ELEMENTARY SCHOOLS (GRADES K-5)

Student Assignment Processes and School Choice Options

Seminole County Public Schools manages a wide variety of student assignment and school choice transfer options in an effort to accommodate family choice to the maximum extent possible while also seeking to minimize overcrowded conditions, promote and maintain diverse student enrollment, support the implementation of ePathways initiatives to the maximum extent possible, and maintain compliance with any state mandates. These processes and options are outlined over the next several pages.

JANUARY 1 –
MARCH 1, 2024

On Time Application Period

There is a sibling link for students to attend the same school that his/her sibling currently attends and will continue to attend. The new student is required to submit an application during the on time application period. Current students do not need to re-apply.



ELEMENTARY SCHOOL MAGNETS

- Magnet Schools & Magnet Programs are high-quality and innovative educational programs that specialize in a particular theme and are open to all Seminole County students.
- Transportation is provided to all students who live more than 2 miles from the school/program.
- Program Links are available from specified elementary schools to specified middle schools per School Board Policy 5120. Applications must be submitted during the on time application period in order for the specified link to be applied.



GOLDSBORO ELEMENTARY Math, Science, & Technology Magnet School

1300 West 20th St. • Sanford, FL
407.320.5850
www.goldsboro.scps.k12.fl.us

**PROGRAM LINK TO SANFORD
MIDDLE SCHOOL**



HAMILTON ELEMENTARY School of Engineering & Technology

1501 East 8th St. • Sanford, FL
407.320.6050
www.hamilton.scps.k12.fl.us

**PROGRAM LINK TO MILWEE
MIDDLE SCHOOL**



IDYLLWILDE ELEMENTARY Future Ready Academy

430 Vihlen Rd. • Sanford, FL
407.320.3750
www.idyllwilde.scps.k12.fl.us



MIDWAY ELEMENTARY School of the Arts

2368 Brisson Ave. • Sanford, FL
407.320.5950
www.midway.scps.k12.fl.us

**PROGRAM LINK TO MILLENNIUM
MIDDLE SCHOOL**



PINE CREST ELEMENTARY Magnet School of Innovation

405 West 27th St. • Sanford, FL
407.320.5450
www.pinecrest.scps.k12.fl.us



WICKLOW ELEMENTARY Magnet School for Global Pathways

100 Placid Lake Dr. • Sanford, FL
407.320.1250
www.wicklow.scps.k12.fl.us

THE UNIVERSE IS WAITING!



GOLDSBORO ELEMENTARY

Magnet School's academic program is driven by problem-solving, discovery, and exploratory learning through integrated STEM experiences.

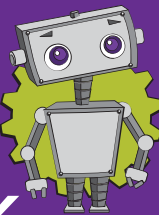


Students engage in real-world experiences within our unique lab spaces including The Kids Space Center, Bio-Science Lab, Robotics and Computer Coding Lab, Mathematics Lab, Virtual Reality Lab, and Maker Space to stretch their imagination and work collaboratively to solve problems through Science, Technology, Engineering, and Mathematics.

1300 West 20th Street | Sanford, FL 32771 | 407-320-5850 | www.goldsboro.scps.k12.fl.us

SCHOOL OF ENGINEERING AND TECHNOLOGY

HAMILTON ELEMENTARY



DEVELOPING
FUTURE ENGINEERS,
CRITICAL THINKERS
AND THE NEXT
GENERATION OF
INVENTORS

ENGINEERING THE FUTURE TODAY

Engineering and technology are integrated into language arts, mathematics, science and special area standards through engineering design units created exclusively for Hamilton students.

Program incorporates *Engineering is Elementary*® and Lego® Robotics into the K-5 academic experience.

Students engineer real-world designs including playgrounds, planetary rovers, rollercoasters, racecars, windmills, 3D printed prototypes, light mazes, weather gadgets, zip lines, and more.



1501 East 8th Street | Sanford, FL 32771 | 407-320-6050 | www.hamilton.scps.k12.fl.us



**IDYLLWILDE
ELEMENTARY**
Future Ready Academy

IGNITING INQUIRY, INSPIRING LEADERS.



Idyllwild Elementary Future Ready Academy is authorized to offer the prestigious **INTERNATIONAL BACCALAUREATE PRIMARY YEARS PROGRAMME**.

The IB PYP challenges students to think for themselves and take responsibility for their learning as they **EXPLORE** and **SEEK SOLUTIONS** to **LOCAL AND GLOBAL ISSUES**.

Our **WORLD-CLASS MAGNET PROGRAM** gives students the opportunity to receive **INQUIRY DRIVEN INSTRUCTION** and leadership skills through Franklin Covey's Leader in Me® model to create a **CULTURE OF STUDENT EMPOWERMENT**.



430 Vihlen Road | Sanford, FL 32771 | 407-320-3750 | www.idyllwild.scps.k12.fl.us



Where Excellence Takes Center Stage.



Midway is the only Artful Learning School in the state of Florida and 1 of only 17 in the country.

ARTFUL LEARNING infuses arts into all academic areas and builds creativity in the learning process.



Students become performers and explore careers through unique studios specializing in dance, instrumental band, vocal music, orchestra, visual art, and computer science/coding.

The Annual Broadway show allows students to experience all facets of theatre in a full-scale setting: stage presence, acting, singing, dancing, lighting, set design, and audio/visual.

2368 Brisson Avenue | Sanford, FL 32771 | 407-320-5950 | www.midway.scps.k12.fl.us



**Pine Crest
Elementary**
School of Innovation

SHAPING THE FUTURE THROUGH INNOVATION...

Students at Pine Crest Elementary Magnet School of Innovation:



IMAGINE

by harnessing the power of teamwork and a design thinking framework to effectively explore new ideas.



CREATE

by leveraging technology and collaboratively engaging in problem solving to generate concepts and bring solutions to life.



CONNECT

with others in our school, our local community, across the state, and/or on a national scale via self-directed learning projects to solve student-identified issues.

Students experience Computer Science immersion, which lays the foundation for pursuing high demand jobs of tomorrow.

eSports and Phab Labs combine Computer Science and problem-solving opportunities, which transitions students from just players into creators.

Innovative school campus beams with state-of-the-art collaborative spaces and technology.



405 West 27th Street | Sanford, FL 32773 | 407-320-5450 | www.pinecrest.scps.k12.fl.us



EXPLORE WICKLOW, EXPLORE THE WORLD.



Wicklow Elementary Magnet School for Global Pathways is an authorized IB World School where students have the opportunity to learn a second language through our Dual Language Immersion Program or by studying Spanish/French in our World Language Program.



The ONLY SCPS elementary school that offers 2 world languages (French and Spanish).

Become a globally-minded citizen equipped with the strategies, knowledge, and skills needed to pursue excellence in our modern society.

Investigate and connect firsthand with cultures of the world through language immersion, partnerships, and state-of-the-art technology.

Learn to listen, speak, read, and write in two languages; achieve academic excellence through an international approach; and develop cultural awareness and sensitivity.

100 Placid Lake Drive | Sanford, FL 32773 | 407.320.1250 | www.wicklow.scps.k12.fl.us



For families residing in elementary region school zones, magnet placement will **OVERRIDE** region school zone assignment and result in region school zone applications being withdrawn.

How to Apply for an **ELEMENTARY SCHOOL MAGNET**

STEP

1

DETERMINE IF YOUR CHILD IS ELIGIBLE TO APPLY FOR A MAGNET SCHOOL.

- If your family is zoned to an elementary region school zone (Region 1, Region 2, Region 3), you would access the magnet schools **in your school zone via the elementary region school zone application.**
- If your family is zoned to an elementary region school zone, you would access the magnet schools **outside of your school zone via the elementary magnet application.**
- For families residing in elementary region school zones, **magnet placement outside the region will override region school zone assignment and will result in region school zone applications being withdrawn.**
- All Seminole County families living in single school zones (i.e. - Lake Mary, Heathrow, Wekiva, Stenstrom, etc.) would access the magnet schools **via the elementary magnet application.**

STEP

2

SUBMIT THE MAGNET SCHOOL APPLICATION VIA THE ONLINE APPLICATION SYSTEM.

- Apply online at <https://scpsflc.scriborder.com>.
- Students may only submit one magnet school application.
- Confirmation email will be sent upon submission.

STEP

3

NOTIFICATION EMAIL.

- On time lottery applications = school assignment email sent in late March/early April each year.
- Based upon limited seat availability, some on time applicants may receive a wait list email.

STEP

4

ACCEPT YOUR CHILD'S MAGNET SCHOOL ASSIGNMENT OR WAIT LIST SEAT VIA THE ONLINE APPLICATION SYSTEM.

- Log into your parent/guardian account at <https://scpsflc.scriborder.com>
- Accept your child's approved magnet school placement by the stated deadline.

STEP

5

IF ACCEPTED INTO A MAGNET SCHOOL, FAMILIES MUST COMPLETE THE APPROPRIATE STEPS FOR ENROLLMENT.

- Visit **Enrolling Your Student** online: <https://bit.ly/SCPSEnrollmentInfo>
- If the parents/guardians do not enroll their child by the stated deadline, they will be required to submit a new magnet school application and their child will be placed on the wait list.